



Center for Excellence in Logistics and Distribution (CELDi)

**James S. Noble, MU Site Director
Industrial and Mfg Systems Engineering
E3437 Lafferre Hall
Columbia, MO 65211
573-882-9561
noblej@missouri.edu**

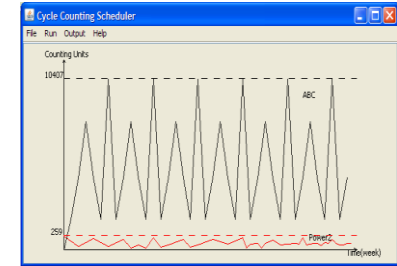


**A National Science Foundation sponsored
Industry/University Cooperative Research Center (I/UCRC)**

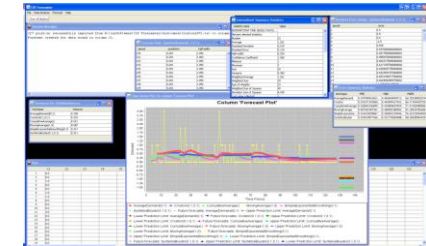
Center Designated Projects



Improve Inventory Accuracy through Optimal Cycle Counting



An Intermittent Demand Forecasting Tool



Data-Driven Adaptive Forecasting and Inventory Control

Part_ID	Per Period Holding Cost	Per-Period Encoder Cost	Per-Period Total Cost	Holding Cost For Error Range	Backorder Cost For Error Range	Total Cost For Error Range
SOLA6070	\$40.41	\$12.17	\$52.58	\$3,789.83	\$1,131.44	\$4,921.26
SOLA4048	\$15.93	\$1.57	\$17.50	\$1,216.32	\$119.59	\$1,335.91
SOLA1460	\$26.96	\$114.14	\$141.10	\$22,037.72	\$110,015.33	\$132,052.99
SOLA1330	\$12.49	\$71.60	\$24.14	\$15,112.00	\$6,684.05	\$21,796.05
SOLA4950a	\$0.05	\$0.45	\$1.10	\$13.80	\$9.95	\$23.75
SOLA7070	\$0.32	\$4.36	\$10.00	\$132.73	\$91.54	\$247.27
SOLA4710	\$1,763.52	\$964.07	\$2,727.59	\$262,236.95	\$140,424.42	\$402,771.47
SOLA7490a	\$439.52	\$208.91	\$648.43	\$64,008.99	\$23,798.00	\$87,806.99
SOLA2200a	\$36.54	\$21.25	\$57.80	\$3,286.46	\$1,376.64	\$4,663.10
SOLA5770a	\$6.40	\$1.85	\$8.25	\$506.97	\$753.29	\$1,260.26
SOLA9700a	\$19.90	\$20.76	\$40.64	\$5,726.85	\$2,963.30	\$8,690.15

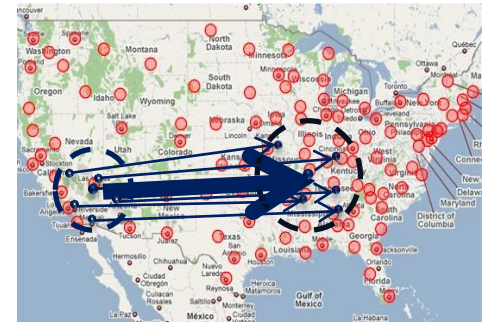
Center Designated Projects



Automated Asset Locating System



Logistics Network Design for Less-than-Truckload Consolidation



Helping Green Belts Use What They Know



Current Center Designated Projects



Development of Logistics Efficiency Metrics



Supply Chain Networks Simulator Using
Cloud Computing



Congestion-Based Design of Supply Chain
Networks



Integrated Freight Consolidation & Shipping
Models in International Supply Networks



Decision Support for Warehouse Design




Home
Success Stories
Mission & Organization
How to Join
Member Organizations
Center-Designated
Projects
Conferences
Researchers
Education

Research Team Info
Member Login
Director's Portal

What is CELDi.ppt

Learn more about the
NSF IUCRC Program



Member Login:

User Name:

Password:

Login

Project Categories

Logistics Systems
Analysis and Design

Material Flow Design and
Improvement

Supply Chain Modeling

Intelligent Systems

CELDi News &
Newsletters

2010
2009
2008

Upcoming IAB Meeting
April 12-13 in Denver, CO
[Link to New Schedule](#)

- Login Page
- Project Descriptions and reports

▪ Download CDP Products:
http://www.celdi.ineg.uark.edu/cdp_products.asp